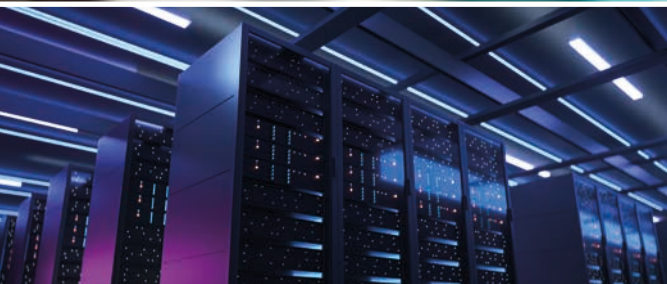




ME-Automation Projects

Performance. Precision. Partnership.

A Group Company of



ME-Automation Projects GmbH

**YOUR RELIABLE PARTNER FOR
ELECTRICAL ENGINEERING
AND AUTOMATION
SOLUTIONS**

We match the correct technology with exceptional services to give our customers the exact and best solution for their plant.

Performance. Precision. Partnership.



COMPANY OVERVIEW

OUR FOCUS SECTORS



Water

- Potable water plants
- Waste water treatment plants
- Desalination plants

Power Generation

- Thermal power plants
- Energy from waste
- Biomass
- Renewable energy



Material Handling

- Robotic pick and place
- Packaging

WHO WE ARE AND WHAT WE DO

ME-Automation Projects GmbH (MEAG) is a 100% subsidiary of Mitsubishi Electric Corporation. With more than 40 years of experience and over 600 successful projects, we provide cutting edge solutions and services in the automation and electrification space.

As a full Electrical Engineering, Instrumentation and Control (EI&C) solution provider, we combine the correct technology with exceptional services to give our customers the exact and best solution for their plant. All needed technologies and services for your project are provided by MEAG:

TECHNOLOGIES

- Instrumentation
- Advanced automation
- DCS / SCADA
- Drives, motors
- Safety systems
- Transformers
- Switchgear (MV / LV)
- Power quality

LIFE-CYCLE SERVICES

- Project management
- Project-life-cycle-engineering
- Detailed design
- Manufacture and logistics
- Installation (supervision)
- Commissioning (supervision)
- Post-warranty services



Data Centers

- Energy supply
- DCIM



BUSINESS ETHICS

BUSINESS ETHICS



WITH A LONG TRACK RECORD OF PROBLEM-FREE PROJECT EXECUTION, WE ENSURE

- Meeting project timelines and successful plant startup
- Highest possible safety, reliability and availability
- Lowest possible plant down time
- Maximal operational efficiency
- Minimized total cost of ownership

As a part of Mitsubishi Electric Corporation, we stand for the same values. Especially the slogan "Changes for the better" has a high impact on our attitude to "always strive to achieve something better", as we continue to change and grow. For us, integrity, financial stability and sustainability are inextricably linked to the goal of creating "an even better tomorrow."

Changes for the Better

WHAT WE STAND FOR

Our mantra "Performance. Precision. Partnership." is a statement of commitment to our customers:

Performance.

We always perform to the highest standards, within budget and on time, with assured quality and reliability.

Precision.

We specify and deliver projects with utmost precision, with a precise eye for detail to meet the customer's exact customization requirements.

Partnership.

We value long-lasting and productive partnerships, meaning lower risks for our customers through a trusted partner.



OUR SOLUTIONS

OUR SOLUTIONS

GROUNDBREAKING TECHNOLOGIES

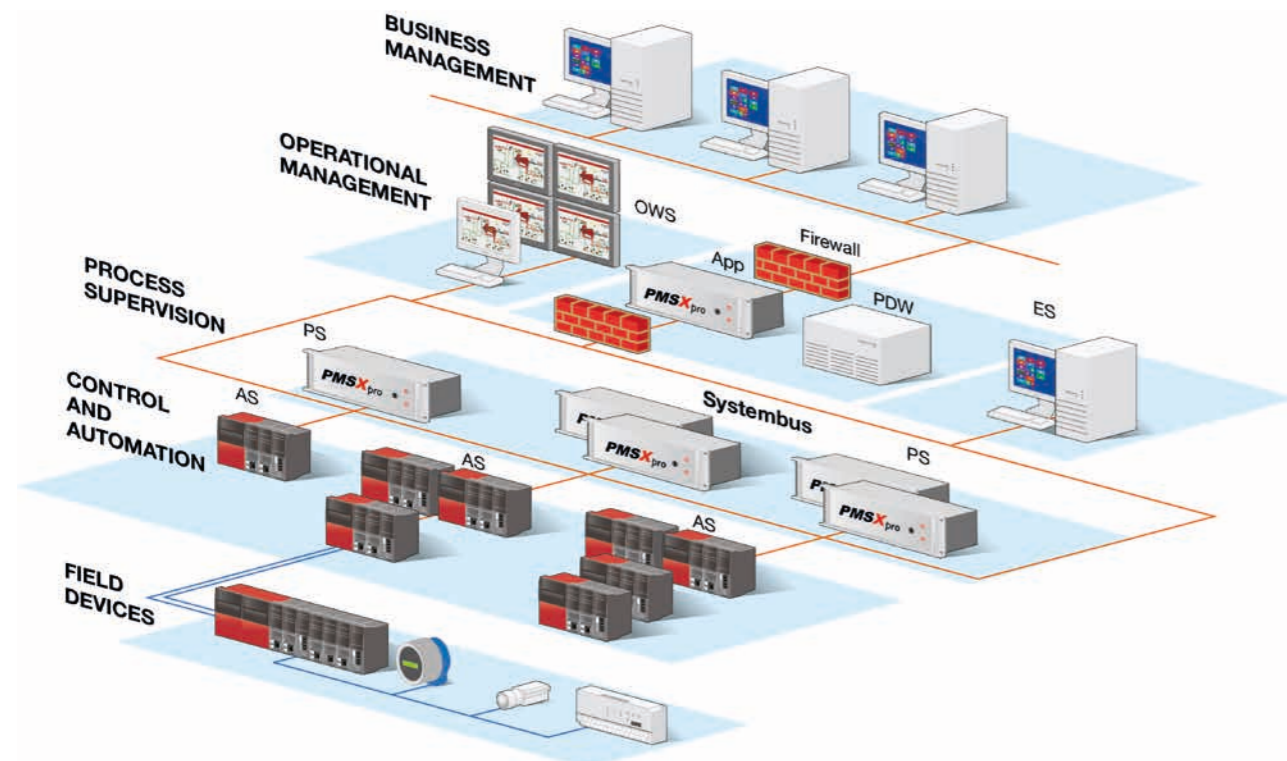
Our complete solutions consist of control and automation technology, medium- and low-voltage switchgear, field instrumentation including all cabling and installation work, as well as all engineering services starting with project

management, detailed design and engineering to installation and commissioning, documentation, optimization and maintenance.

PMSX_{pro} Plant Automation System

PMSXpro is a proven Distributed Control System (DCS) with a long successful track record. It already controls numerous process plants for more than 40 years and we still have not stopped a single plant due to a failure of PMSXpro. PMSXpro stands for performance at all levels – from robust, high-avail-

ability plant control to business analytics. Our plant automation solution offers decision-ready management information coupled with maximum resilience and high automation performance, powerful, standardized engineering and hassle-free, easy-to-use operational plant management.



Electrical Balance of Plant

Electrical Balance of Plant (EBoP) is an essential component of systems for the distribution of electrical energy within the plant. We can deliver Medium and Low Voltage switchgear to offer reliable and safe supply of electrical energy throughout the plant ensuring reliable protection of all electrical systems.

Safety, efficiency and availability are the key factors of our switchgear products. We offer a complete solution, including Transformers, Variable Frequency Drives (VFD), Protection Systems, Substations, Power Quality Equipment, Energy Management, Uninterruptible and Backup Power Supplies.

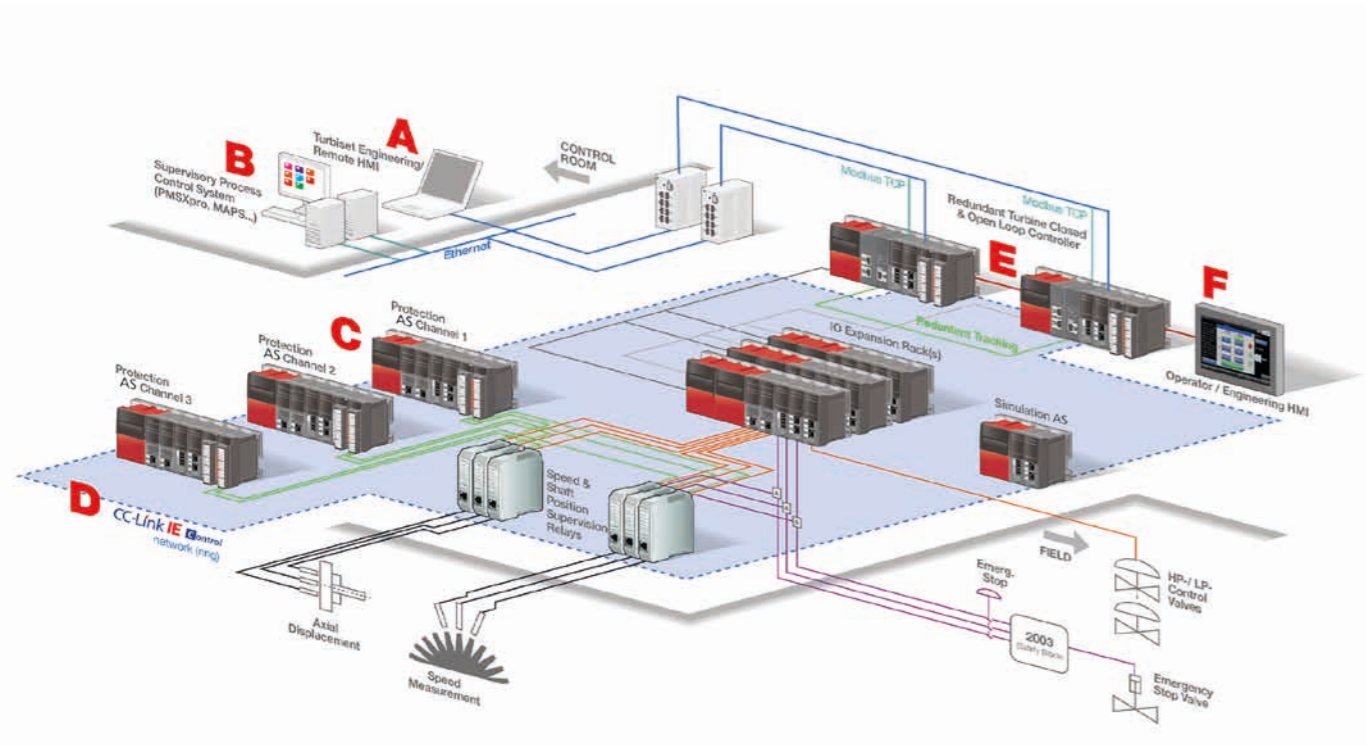
OUR SOLUTIONS

OUR SOLUTIONS

Turbiset – Steam Turbine Control

Turbiset is our reliable, robust control and protection system for steam turbines. The reliability is a result of the 2 out of 3 voting protection against overspeed or axial and radial displacement. Through this, we have optimized steam process loops, maximized turbine efficiency and steam stability.

Turbiset is offered as a turnkey package. Hence, Turbiset is a solution providing enhanced control, protection and surveillance of steam turbines with built-in control features and contributing to simplify plant operations for improved flexibility and overall plant productivity.



PMSX_{sas} – Smart Substation Automation System

With PMSX_{sas} you can plan and execute your next smart substation project – confidently and without risk. With our smart substation automation system, you receive a clear depiction

of substation network and protection scheme status, safe operation of all breakers in the substation and surveillance of all substation alarms and condition.

OUR SOLUTIONS

OUR PROMISE

PMSX_{care} Lifetime maintenance of your process control system

A Plant Automation System is one of the most critical yet also most complex assets within any plant – it contributes singularly to the safety, availability and profitability of the plant. With our service offerings, we remain at your side even after we've successfully commissioned the automation and control system.

On the contrary, we know how critical a 100% flawlessly running Plant Automation System is to you. PMSXcare is our commitment that our PMSXpro plant automation system simply delivers – 365/24/7.

Service packages – PMSX_{care}

STANDARD	PRO	PRO+
Adapted to your requirements and budgets	Everything that is also included in Standard level	Everything that is also included in Pro level
Service-Desk, Factory Support, scan antivirus programs	24/7 on-site support	24/7 on-site support
Your system is always up to date (PMSXpro Patches)	Self-Service Support-portal, PMSXpro product support (first line)	Product support (second line)
10 engineering hours inclusive	Operating patches and firmware, cyber security audit	PMSXpro software releases and hardware updates
Many selectable options	50 engineering hours inclusive	Service credit (transferability 50 %) and escalation management
	Many selectable options	100 engineering hours inclusive
		Many selectable options



IN SHORT, WE DELIVER PEACE OF MIND

We offer our clients the best and exact solution required, with a flexible configuration and wide range of options. MEAG delivers complete, turn-key plant automation and electrification systems, and of course we stay by your side with lifetime

maintenance of your process control systems. You can trust in the highest availability and reliability of automation equipment and a performance based on more than 40 years of experience.



ME-Automation Projects

Performance. Precision. Partnership.

A Group Company of



ME-Automation Projects GmbH
A Mitsubishi Electric Group Company

Kasseler Straße 62
D-34277 Fuldabrück

Telephone: +49 (0) 561 / 58 54 – 0
info@me-ap.de
www.me-ap.de



Visit us on LinkedIn